

minicap

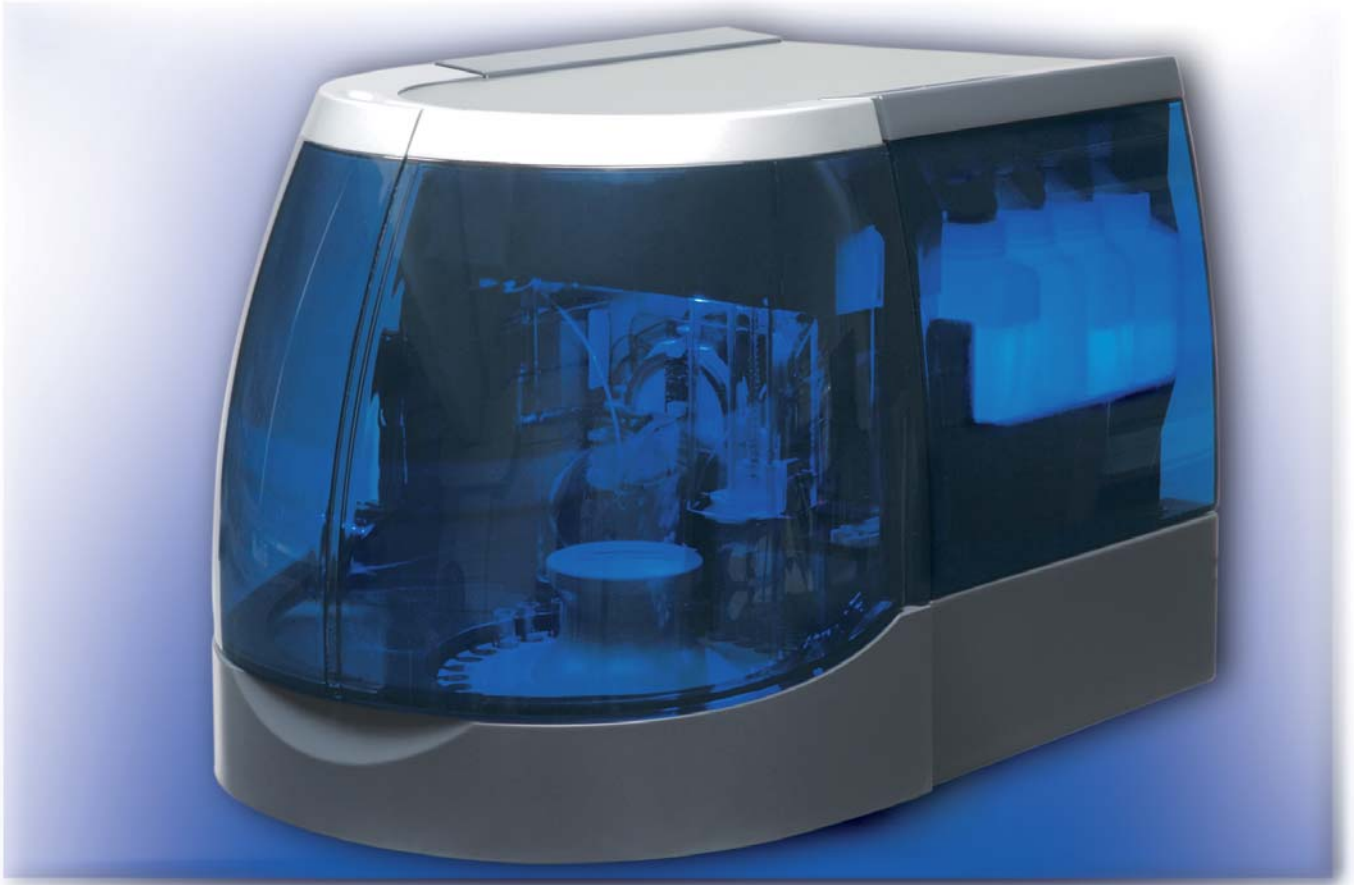


sebia

# MINICAP

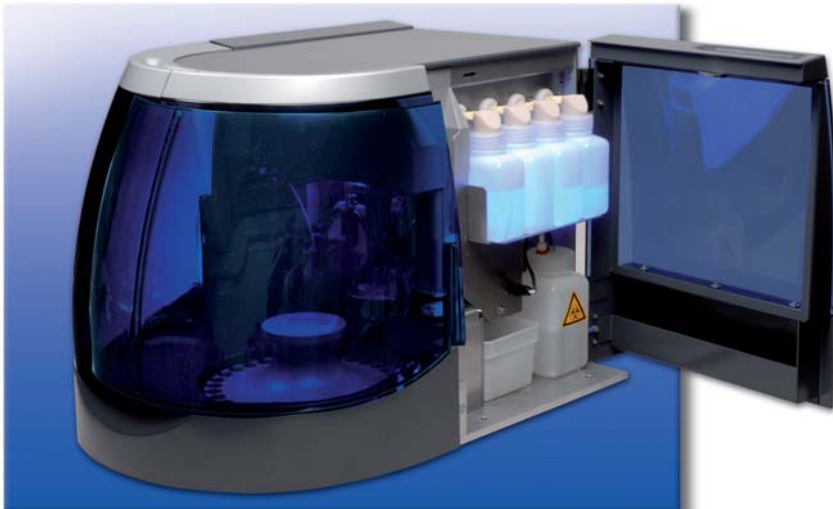
THE NEW DIMENSION OF CAPILLARY ELECTROPHORESIS

---



MINICAP represents the latest evolution of SEBIA's innovative Capillary Electrophoresis technology. The MINICAP provides small to medium sized laboratories all of the benefits of Sebia's Capillary technology with the added advantage of a smaller instrument footprint.

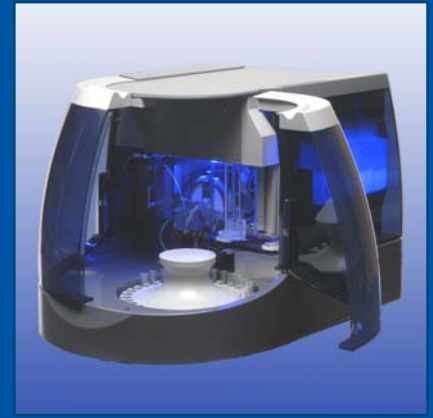
Menu expansion includes both traditional and innovative assays such as serum and urine proteins, Immunotyping (automated IF testing), hemoglobinopathy, and Carbohydrate-Deficient Transferrin (chronic alcohol abuse marker).



Sebia's MINICAP, part of the family of Capillary Electrophoresis systems, offers both flexibility and increased levels of standardization for reporting of results in the clinical diagnostic laboratory.

## SAMPLER

- Initial loading of 28 tubes.
- Primary tubes: 16 x 100 mm, 17 x 100 mm (maximum), 8 mm microtubes.
- Throughput: around 22 samples/hour (protein electrophoresis).
- Sample tube identification with High Resolution barcode reader.
- Complete walk-away automation from start to finish.



## MIGRATION

- Electrophoresis in liquid flow.
- 2 silica capillaries.
- 2 simultaneous sample migrations (protein electrophoresis).
- Automatic loading of the disposable anodic segments.
- 2 reagents / 2 assays on board.
- Migrations at controlled temperature with a thermoelectric cooler (Peltier device).
- Highly reproducible results the two analyses and two capillaries.



## OPTICS

- Deuterium lamp
- Interferential filters 200 - 415 nm (direct protein and hemoglobin detection at their specific wavelength)
- Optical fibers for emission and reception.
- UV lenses.
- Photo - diode detector.



## PROGRAM

- Automatic delimiting of curves and identification of fractions minimizing operator editing.
- Reagent traceability.
- Comprehensive quality control program with statistical reduction of three Q.C. levels including Levey-Jennings charts.
- Customizable printing allowing compressed printouts of results and curves.
- Possibility to select the order in which results should be printed.
- Ability to import quantitative specific protein results providing one comprehensive chartable report.
- Curves and results stored on the hard drive.
- Intra-lab result database network.
- Inter-lab result transfer through e-mail or analog modem.

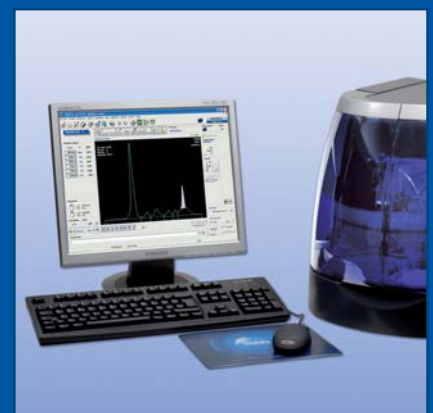


## GENERAL SPECIFICATIONS

- Dimensions : L 57,5 x H 41,1 x P 43,0.  
L 22.6 in X H 16.2 in X W 16.9 in.
- Weight : 30 kg / 66.1 lbs.

## CONNECTIONS

- Power source inlet: 90 to 264 V - 50/60 Hz +/- 5% - 300 VA.
- Connections through PC command.



**sebia**

Parc Technologique Léonard de Vinci  
CP 8010 Lisses - 91008 EVRY Cedex - France  
Tél. : 33 (0)1 69 89 80 80 - e-mail : [sebia@sebia.com](mailto:sebia@sebia.com)

**sebia Benelux s.a. / n.v.**

Jan Olieslagerslaan, 41  
1800 Vilvoorde  
Belgique / België  
Tél. : 32 (0)2 702 64 64  
Fax : 32 (0)2 702 64 60  
e-mail : [sebia.benelux@sebia.be](mailto:sebia.benelux@sebia.be)

**sebia GmbH**

Münsterfeldallee, 6  
36041 Fulda  
Deutschland  
Tel. : 49 (0)661 3 30 81  
Fax : 49 (0)661 3 18 81  
e-mail : [sebia@sebia.de](mailto:sebia@sebia.de)

**sebia Hispania s.A.**

C / Sicilia, n° 394  
08025 Barcelona  
España  
Tel. : 34 93 208 15 52  
Fax : 34 93 458 55 86  
e-mail : [sebia@sebia.es](mailto:sebia@sebia.es)

**sebia Inc.**

400-1705 Corporate Drive  
Norcross, GA 30093  
U.S.A.  
Tel. : 1 770 446 - 3707  
Fax : 1 770 446 - 8511  
e-mail : [info@sebia-usa.com](mailto:info@sebia-usa.com)

**sebia Italia S.r.l.**

Via Antonio Meucci, 15/a  
50012 Bagno a Ripoli (FI)  
Italia  
Tel. : 39 055 24851  
Fax : 39 055 2485400  
e-mail : [info@sebia.it](mailto:info@sebia.it)

**sebia UK Ltd**

River Court, Meadows Business Park  
Station Approach, Blackwater  
Camberley, Surrey, GU17 9AB  
United Kingdom  
Tel. : 44 (0)1276 600636  
Fax : 44 (0)1276 38827  
e-mail : [info@sebia.co.uk](mailto:info@sebia.co.uk)

**sebia**

Representative office  
333 JiuJiang Road, 22/FL  
Shanghai 200001  
China  
Tel. : 00 86(21) 6361 2010  
Fax : 00 86(21) 6361 2011  
e-mail : [sebia@sebia.cn](mailto:sebia@sebia.cn)